

MONTHLY MEMBERSHIP PROGRESS REPORT

District 201N5

Results as of: 10/31/2023

GMT:

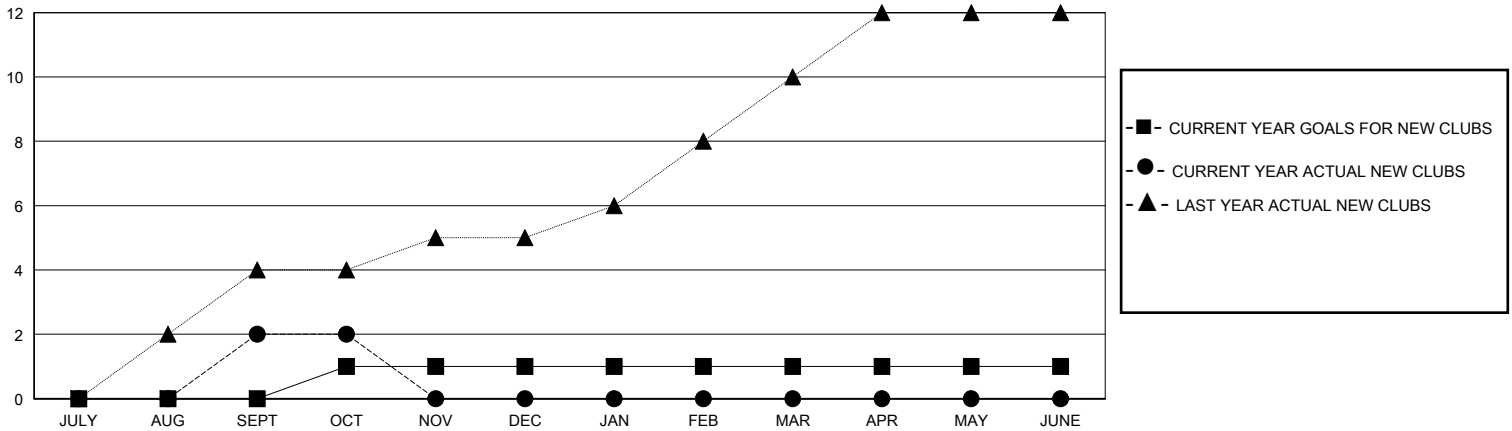
LOCATION AUSTRALIA

GMT CA

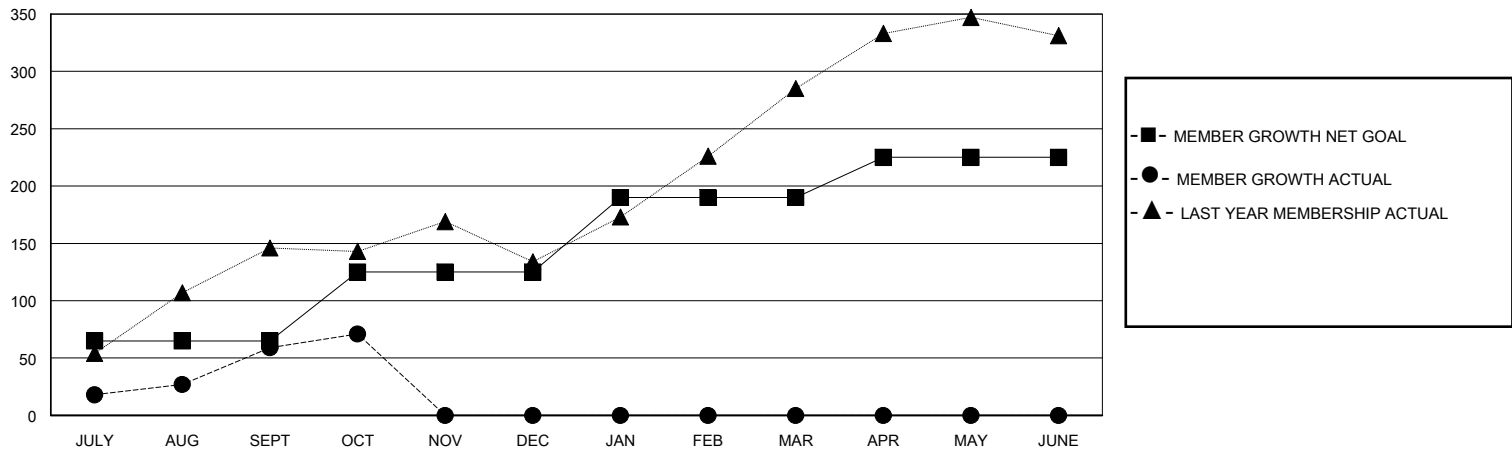
Clubs			
RESULTS FOR 2023-2024			
QUARTER	NEW CLUB GOAL	NEW CLUBS	DROPPED CLUBS
JULY/AUG/SEPT	0	2	0
OCT/NOV/DEC	1	0	0
JAN/FEB/MAR	0	0	0
APR/MAY/JUNE	0	0	0

Members			
RESULTS FOR 2023-2024			
QUARTER	MEMBER GROWTH NET GOAL	MEMBER GROWTH ACTUAL	DROPPED MEMBERS ACTUAL (including transfers)
JULY/AUG/SEPT	65	127	61
OCT/NOV/DEC	60	43	29
JAN/FEB/MAR	65	0	0
APR/MAY/JUNE	35	0	0

GOALS AND ACTUAL NEW CLUBS CUMULATIVE



GOALS AND ACTUAL MEMBERS CUMULATIVE



DROPPED CLUBS: 0	37 CLUBS OF 81 ADDED 1 OR MORE NEW MEMBERS	<u>GENDER DISTRIBUTION</u>	
<u>DROPPED MEMBERS</u>		MALE	1,168 (60.02%)
DECEASED	2	FEMALE	775 (39.83%)
CLUB CANCELLED	0	TOTAL FAMILY UNIT MEMBERS 256	
OTHER	88	FAMILY MEMBERS PAYING HALF DUES 136	
TOTAL	90		

[CLICK HERE FOR CUMULATIVE MEMBERSHIP DATA](#)